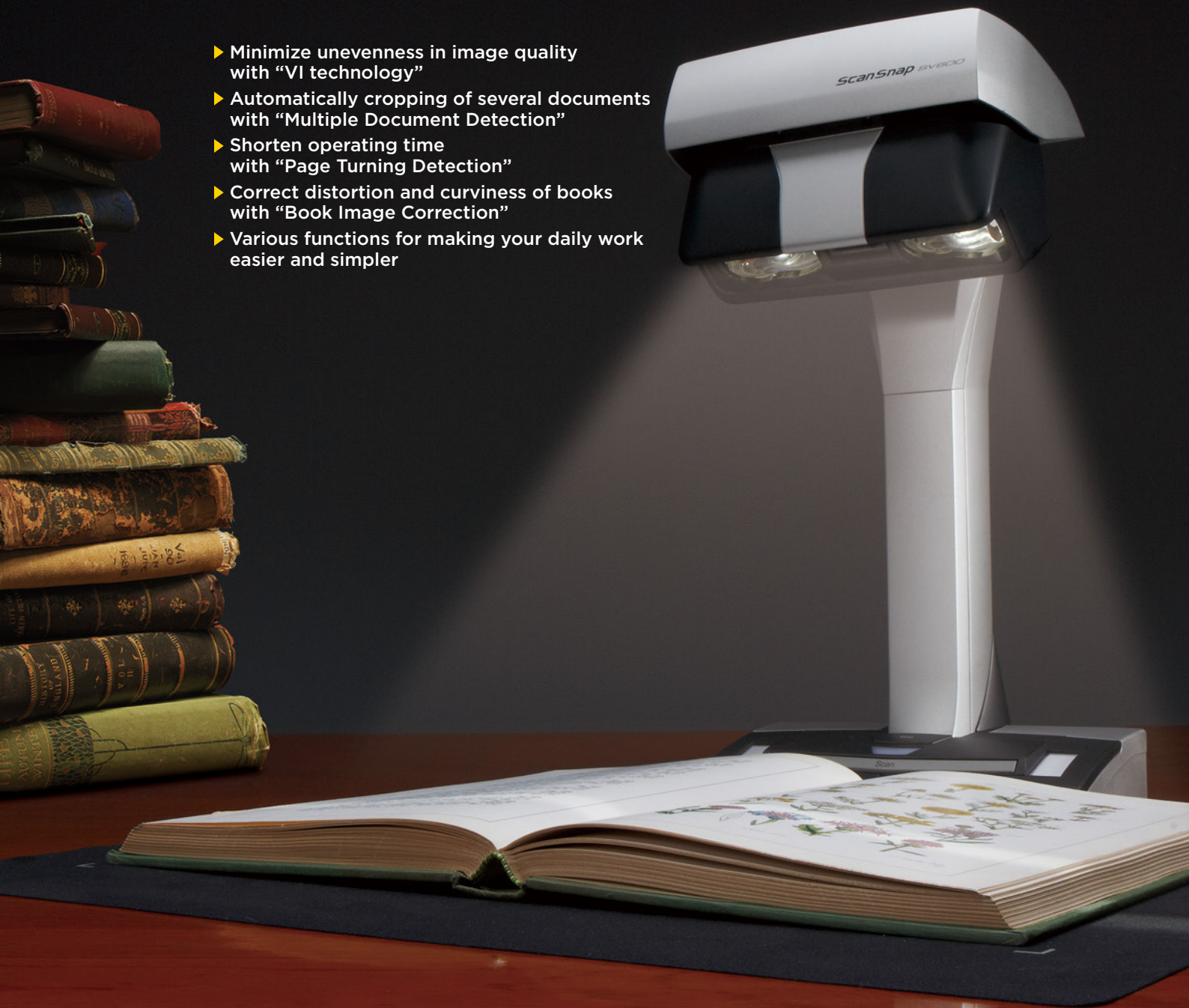


RICOH
imagine. change.

ScanSnap *SV600*

*Simple, Speedy & Compact.
From Paper to PDF in one touch!*

- ▶ Minimize unevenness in image quality with "VI technology"
- ▶ Automatically cropping of several documents with "Multiple Document Detection"
- ▶ Shorten operating time with "Page Turning Detection"
- ▶ Correct distortion and curviness of books with "Book Image Correction"
- ▶ Various functions for making your daily work easier and simpler



A New Perspective on scanning

ScanSnap
SV600



Digitize anything with ease

You can scan newspaper, magazines or books directly without cutting or damaging it.

Scan anything from business cards to A3 size (landscape)* documents

No more hassle to cut or fold documents larger than A4 size such as newspaper and magazines, simply position the documents and they can be scanned directly without any extra effort.

* The maximum document size will be 400 x 300 mm when the thickness of the document is over 5 mm.

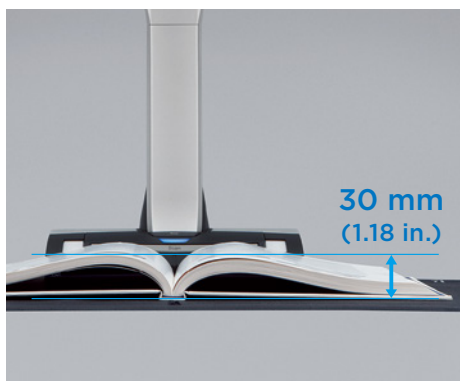


A3 Size

No problem in scanning thick documents*

Not only books or magazines, but also documents with sticky notes can be scanned directly without any difficulty.

* Maximum document thickness is 30 mm (1.18 in.).



No need to worry about your delicate documents or books

With "VI technology", scanning can be performed without touching the document. You do not need to worry that documents such as crayon or oil paintings, pencil writings or photos will be damaged by touching.



VI technology*

(*VI technology: Versatile Imaging technology)

Equipped with "VI technology" which combines Deep depth of field lens, CCD linear image sensor and High directivity LED lamp, SV600 is able to minimize unevenness in image quality and generate smooth image even scanning from a distance.



Overhead structure

*Due to the characteristics of overhead scanner, the image quality is different from the past ScanSnap series. Please confirm the image quality of SV600 from ScanSnap website before making purchase.

Deep depth of field lens

Wide auto focus area (even the focusing distance has changed)

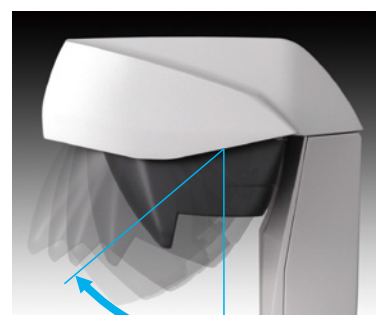
CCD linear image sensor

Produce steady images



High directivity LED lamp

Maintain same brightness without affecting by the surrounding



Scan by moving the head

Convenient for book scanning

Step 1

You can continuously scan multiple pages smoothly.

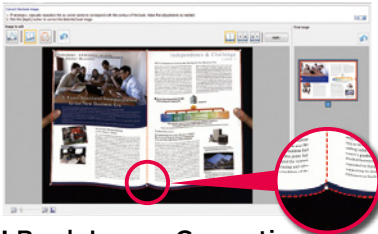
Page Turning Detection
Automatically detect when the page is turned.

Timed Mode

You can set the time to start scanning after the "Scan" button is pressed. (When continuous scanning) you can set the time interval before the next scanning to begin.

Step 2

Book Image Correction – Automatically correct distortion caused by the curve of an opened book. You can confirm and fine tune the scanned images on the preview dialog after scanning.



Book Image Correction

Can easily correct distortion of the document.



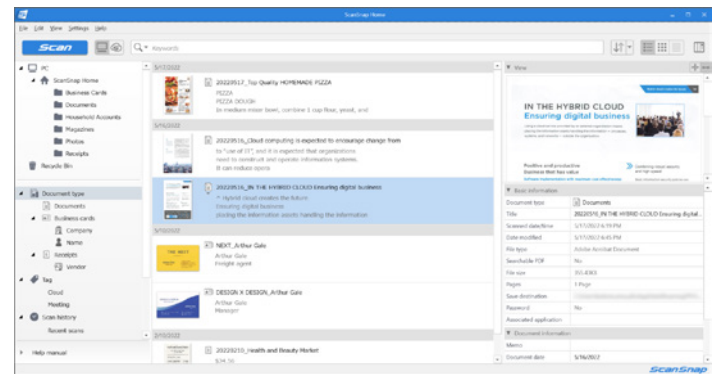
Point Retouch function

Finger images scanned while suppressing the document can be corrected with ease.



ScanSnap Home (for PC) - Powerful software that integrates all document productivity features

ScanSnap Home (for PC) combines all your favorite functions into one and is the ultimate platform to utilize scanned data in various ways. Easily manage, edit and utilize data from documents, business cards, receipts and photos with the software. You can scan large volumes of documents of various types, from color photos to double-sided landscape documents with a host of intelligent automatic image processing functions.



Quickly find that recipe or meeting agenda that you stored last week with easy access tags.



Contact whoever you need right away with the software organizing captured data according to company name and much more.



Create an original album and share important memories with your family and friends.

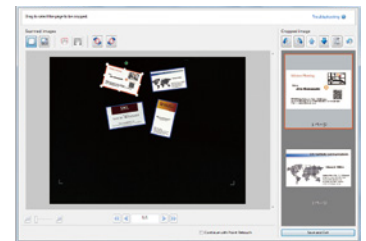


Keep track of your spending habits each month so that you can check back whenever you desire.

Automatically cropping of several documents with "Multiple Document Detection"

With only one touch and one scan, the "Multiple Document Detection" function is able to crop several documents at the same time when positioning in the scanning area. You can save time and hassle by placing several business cards, photos, newspaper clippings and other documents at once and let SV600 does the cropping intelligently for you.

* Up to 10 documents can be cropped as long distances between documents are over 15 mm.



Fast start up time and scanning speed lead to time saving and efficiency

SV600's start up time is so quick; scanning is ready in only 3 seconds after switching on the scanner. Furthermore, less than 3 seconds are needed for scanning large A3 size documents. This high speed scanning let you enjoy stress free scanning.

Compact design that does not occupy much work space

SV600 is compact and you can use your work space efficiently as you only need space to place document when scanning. Unlike flatbed scanner, it will not occupy your valuable desk space all the time.

General Specifications

Product name	ScanSnap SV600	
Scanner type	Over Head system, simplex scanning	
Scanning modes	Color, grayscale, monochrome, Automatic (color, grayscale, monochrome detection)	
Image sensor	Lens reduction optics / color CCD x1	
Light source	(White LED + lens illumination) x2	
Optical resolution	Horizontal scanning: 285 to 218 dpi, Vertical scanning: 283 to 152 dpi ^{*1}	
Scanning speed ^{*2} (A3 landscape)	Auto mode ^{*3}	"Better mode" or "Best mode": 3 seconds / page
	Normal mode	Color / Grayscale: 150 dpi, Monochrome: 300 dpi 3 seconds / page ^{*4}
	Better mode	Color / Grayscale: 200 dpi, Monochrome: 400 dpi 3 seconds / page ^{*4}
	Best mode	Color / Grayscale: 300 dpi, Monochrome: 600 dpi 3 seconds / page ^{*4}
	Excellent mode ^{*1*4}	Color / Grayscale: 600 dpi, Monochrome: 1.200 dpi 3 seconds / page ^{*4}
Document size	Automatically recognizes document size, A3(landscape), A4(landscape), A5(landscape), A6(landscape), B4(landscape), B5(landscape), B6(landscape), Post card, Business card, Double Letter(landscape), Letter, Legal(landscape) and Customized size (Max: 432 x 300 mm (17.0 x 11.8 in.), Min: 25.4 x 25.4 mm (1 x 1 in.)) ^{*5}	
Document thickness	30 mm (1.18 in.) or less	
How to start scanning ^{*6}	Select one of the below. 1. Normal scan: Press "Scan" button for every page 2. Timed Interval Scanning (Timed Mode) 3. Page turning detection	
Expected Daily Volume ^{*10}	166 sheets	
Interface ^{*7}	USB2.0 / USB1.1 (connector: B Type)	
Image processing functions	Deskew by text on document, Auto paper size detection, Auto image rotation, Auto color detection, Book image correction ^{*8} , Multiple document detection ^{*9}	
Magnification in vertical scanning (length)	±1.5%	
Power requirement	AC 100 to 240 V, 50 / 60 Hz	
Power consumption	Operating mode: 20 W or less Sleep mode: 2.6 W or less Auto Standby (Off) mode: 0.4 W	
Operation environment	Temperature: 5 to 35 °C (41 to 95 °F) Relative humidity: 20 to 80 % (Non-condensing)	
Dimensions (W x D x H)	210 x 156 x 383 mm	
Device weight	3 kg (6.613 lb)	
Environmental compliance	ENERGY STAR / RoHS	
Driver	Specific driver (Does not support TWAIN / ISIS™)	

^{*1} Optical resolution differs due to different scanning angle on the same document. ^{*2} Scanning speeds may vary due to the system environment. For details, please visit our website at: <https://www.pfu.ricoh.com/global/scanners/scansnap/>. ^{*3} Switch between "Better mode" and "Best mode" depends on the length of the document. A4 (portrait): 200 dpi, A6 size or below: 300 dpi ^{*4} Time between actual start of scanning (scanning pad) and finish scanning. ^{*5} For documents of thickness over 5 mm, the maximum document size is 400 x 300 mm. ^{*6} When performing continuous scanning, time is needed for the scanning head to return to its original position. ^{*7} Compatible with USB 3.0 port but connection will run as USB 2.0 speed. ^{*8} Automatically correct distortion caused by the curve of an opened book or magazine. ^{*9} Digitize multiple documents by automatically cropping several documents in one scan. ^{*10} Numbers are calculated using scanning speeds and typical hours of scanner use, and are not meant to guarantee daily volume or unit durability.

Cleaning Materials

Description	Part number	Remarks
Cleaner F1	PA03950-0352	100 ml bottle For cleaning the glass, camera, lamp etc of the scanning head.
Cleaning Wipe	PA03950-0419	1 pack (24 packets) Wet tissue with "cleaner F1". For cleaning the glass, camera, lamp etc of the scanning head

Option

Description	Part number	Remarks
Background Pad	PA03641-0052	Set in front of the scanner when scanning. ^{*1} One pad is bundled with the scanner

ScanSnap SV600 System Requirements

• Windows

Recommended operating systems		Windows 11 (64-bit) Windows 10 (32-bit / 64-bit) ^{*1*2}
Hardware requirement ^{*3}	CPU ^{*4}	Intel or Intel-compatible processors
	Display resolution	1,024 x 768 pixels or higher
	Disk capacity ^{*5*6}	3.8 GB or more of free disk space

^{*1} ScanSnap scanners do not run with Windows 11 and 10 ARM-based PCs. ^{*2} Operate Windows in desktop mode. ^{*3} The ScanSnap device may not work if the connected computer does not meet these requirements. ^{*4} Scanning speeds may vary due to the system environment. ^{*5} Indicated disk capacity requirements apply when downloading ScanSnap Home (for PC). ^{*6} Microsoft .NET Framework 4.8 or later must be installed. If it is not installed, it is installed with ScanSnap Home (for PC). Up to 4.5 GB of disk space is required for the installation. ^{*}Please refer to the ScanSnap website for the latest support information of the driver and applications. Compatibility may differ depending on the software's version. ^{*}The system requirements may change depending on the duration of support and the support policy of the companies that make the software.

• Mac

Recommended operating systems		macOS Catalina 10.15 or later
Hardware requirement ^{*1}	CPU ^{*2}	Intel processor or Apple silicon
	Display resolution	1,024 x 768 pixels or higher
	Disk capacity	2.5 GB or more of free disk space

^{*1} The ScanSnap device may not work if the connected computer does not meet these requirements. ^{*2} Scanning speeds may vary due to the system environment. ^{*}Please refer to the ScanSnap website for the latest support information of the driver and applications. Compatibility may differ depending on the software's version. ^{*}The system requirements may change depending on the duration of support and the support policy of the companies that make the software.

• Software

Windows	macOS
ScanSnap Home (for PC) ^{*1}	
Kofax Power PDF Standard ^{*2}	Kofax Power PDF Standard for Mac*2
ABBYY FineReader for ScanSnap™	

^{*1} ScanSnap Home (for PC) installation requires a computer and Internet. Please visit the company website for download information. <https://www.pfu.ricoh.com/global/scanners/scansnap/g-support/en/>
^{*2} Please refer to the included license certificate to download the software.

Included items

• AC Cable • AC Adapter • Safety Precautions • USB Cable • Background Pad • Extenders (x2)
--

This scanner is designed to digitize materials that can be reproduced lawfully, in accordance with applicable copyright regulations and other laws. ScanSnap users are responsible for how they use this scanner. It is imperative that ScanSnap users comply with all local rules and laws, including, without limitation, copyright laws when using this scanner.

^{*}ABBYY and FineReader are trademarks of ABBYY Software, Ltd. which may be registered in some jurisdictions. ABBYY™ FineReader™ Engine ©ABBYY. OCR by ABBYY ^{*}Intel is a trademark of Intel Corporation or its subsidiaries. ^{*}ISIS is a trademark of Open Text. ^{*}Mac and macOS are trademarks of Apple Inc., registered in the U.S. and other countries. ^{*}Kofax and Power PDF are trademarks or registered trademarks of Kofax Inc. in the United States and other countries. ^{*}Microsoft and Windows are trademarks of the Microsoft group of companies. ^{*}ScanSnap, the ScanSnap logo and ScanSnap Home are registered trademarks or trademarks of PFU Limited. ^{*}Other company names and product names are the registered trademarks or trademarks of the respective companies.



PFU Limited has determined that this product meets the ENERGY STAR guidelines for energy efficiency. ENERGY STAR and the ENERGY STAR mark are trademarks or registered trademarks of the U.S. Environmental Protection Agency.

Safety Precautions	Be sure to carefully read all safety precautions prior to using this product and use this device as instructed.	Do not place this device in wet, moist, steamy, dusty or oily areas. Using this product under such conditions may result in electrical shock, fire or damage to this product.
---------------------------	---	---